

**SUMMER SESSION (M<sup>3</sup>U)**

July 8 - Aug 3, 2024

Students in grades 9, 10 & 11



## Mathematical Modeling at Mercy University (M<sup>3</sup>U)

Originating in 1994, this renowned program introduces high school students to research methodologies, career options in mathematics and science and even the ethical issues facing today's scientific community.

Using real-world problems from the physical, natural and environmental sciences, Young Scholars are introduced to the mathematical modeling process. Along with classroom instruction and hands-on activities in computer and science laboratories, students will participate in field trips that bring learnings to life.

In the program, Young Scholars will use several software packages and work to develop their final completed project. On the final day, students will have the opportunity to present their projects among peers and parents at the concluding banquet.



## Objective

The goal of M<sup>3</sup>U is to attract capable students – especially women and minorities – into mathematics and science by engaging them as participants in a series of activities designed to highlight mathematics and science as the exciting, challenging, productive and rewarding fields of study that they are.

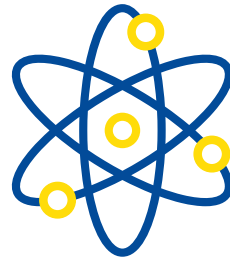
## Who Should Apply?

Women and minorities are especially encouraged to apply. Students who like math and sciences with a “B” or better grade average are invited to apply.





## M<sup>3</sup>U at a Glance



### QUALIFIERS

- Completed application
- Must complete algebra & geometry
- Must currently be in grades 9, 10 or 11

### BENEFITS

- Each participant will receive a stipend of \$700
- Each student will receive a graphing calculator
- There will be a project presentation banquet at the end of the program
- Lots of fun exploring math in an informal environment with peers

### SPONSORS

- Mercy University
- U.S. Department of Education

### PRIOR RESEARCH CENTERS SUPPORT

- Philips Laboratories
- IBM
- Cold Spring Harbor Laboratory
- Regeneron Pharmaceuticals

### CAREER EXPLORATION ACTIVITIES

- Field trips to research centers or museums will bring the young scholars in contact with scientists and to the environments that they work in.
- Speakers will be invited to address the participants on career opportunities and ethical issues in science and mathematics.
- Specialists will be brought in to educate the young scholars on college preparation.

### COST

**FREE.** In addition, each student receives \$700.

### LOCATION

Mercy University Westchester Campus.

### DAILY SCHEDULE

**Time: Monday – Friday • 10:15 a.m. – 4:15 p.m.**

**Final project presentations: Saturday, August 3**

Activities include conducting experiments, writing reports, presenting projects, watching videos, conducting panel discussions, math jeopardy and debates.

### APPLICATION DEADLINE

June 1, 2024

### APPLY TODAY

Scan the QR code, or go online to submit your application: [mercy.edu/m3u](https://mercy.edu/m3u)



Mathematical Modeling at Mercy University is supported by a grant from US ED under MSEIP (Minority Science and Engineering Improvement Program).



## What Students Say

“

I liked the sense of competition, yet still have so much teamwork and friendliness as well as helpful TAs and Teachers.

---

The M<sup>3</sup>U summer program allowed for me to meet new people and collaborate with them. I enjoyed the activities and math problems very much and it allowed for me to be better in math.

”

## What Parents Say

“

Very educational and creative.

---

What an excellent program. Thank you for an opportunity of a lifetime.

---

The exposure has been invaluable. Thank you. It will have a lifelong impact.

---

My daughter was always excited to come home and tell me about her day at this program.

”



Mercy University is a private, non profit institution, offering more than 90 undergraduate and graduate programs taught by Fulbright scholars, authors and leaders in their field.

The groundbreaking PACT (Personalized Achievement Contract) program is an example of our commitment to student success. Students are provided professional PACT mentors who are focused on their academic achievement, career readiness and placement.

[mercy.edu](http://mercy.edu) • [1.877.MERCY.GO](tel:1877MERCYGO)

**SCHOOL OF LIBERAL ARTS**

Dept. of Mathematics &  
Computer Science  
914.674.7536

**PROGRAM DIRECTOR**

Dr. Charles Li  
914.674.7585  
[cli2@mercy.edu](mailto:cli2@mercy.edu)

**CO-DIRECTOR**

Dr. Rosaura Uscanga  
914.888.5169  
[ruscanga@mercy.edu](mailto:ruscanga@mercy.edu)

---

**Westchester Campus**

555 Broadway  
Dobbs Ferry, NY 10522  
914-674-7600